

*Global Energy  
Partners*



**ENGINEERING  
& CONSTRUCTION**

*Putting People First Since 1948*



The Right  
Safety

The Right  
People

The Right  
Solutions

The Right  
Performance

– **The Right Choice** –

# GIS CORPORATE PROFILE: ENGINEERING & CONSTRUCTION

*Putting People First Since 1948*



**GIS Engineering & Construction** is an integrated market-leading engineering and construction services organization delivering flexible, client-focused solutions across all markets.

The GIS Engineering & Construction team offers clients a single point of contact to utilize our 19 strategically located facilities, 2,000+ employees, and 21 service lines. Serving upstream, midstream, and downstream markets, we align our services with operations from the conceptual stage through construction, commissioning, and asset maintenance.

**Delivering Value from Concept to Asset Management.**



**01 CONCEPTUAL / FRONT-END LOADING**

GIS works with our clients in the early planning phases to develop project options, including:

- Feasibility Studies
- Technology Evaluation
- Technology Selection
- Process Optimization
- Front-End Planning
- TIC/Cost Estimating
- Basic Engineering
- Constructability

**02 DETAILED ENGINEERING & PROCUREMENT**

- Project Management
- Process Design
- Mechanical
- Civil/Structural
- Piping
- Instrumentation & Controls
- Electrical
- Environmental
- Project Controls
- Constructability
- Supply Chain Management

**03 CONSTRUCTION MANAGEMENT**

- HSE
- Engineering & Construction Work Package Development
- Contract Strategy
- Subcontract Management
- Material Planning / Management
- Material Procurement
- Fabrication Strategy
- Site Logistics / Facilities
- 4D / 5D Model Development

**04 CONSTRUCTION INSTALLATION**

GIS is a strategic partner with capabilities to self-perform construction of all major disciplines in a safe, accurate and productive manner. From providing a turn-key solution as the General Contractor to discipline specific scopes of work including offsite fabrication, GIS is customer focused and committed to creating solutions to meet our customers' needs. GIS utilizes innovative construction methods and state of the art applications to control project performance.

**05 COMMISSIONING & STARTUP SUPPORT**

Following new facility installation, turnarounds or outages, GIS provides technical support for commissioning and startup, including operator training, Pre-Startup Safety Reviews, validation of construction integrity, system cleanout/pas-sivation, rotating equipment alignment and lubrication preparation, electrical hardware and wiring integrity checks, control loop tuning and safety system verification.



*Through Asset Management, GIS offers Optimization and Asset Performance Improvement services to further enhance operating facilities – which in turn can initiate additional conceptual & feasibility studies.*

**06 MAINTENANCE & TURNAROUNDS**

GIS has the capability to provide ongoing maintenance support to ensure your asset is properly maintained to maximize lifespan of components, resulting in longer runtimes between outages.

In addition to routine maintenance, GIS is your solution to Turnaround execution. Early T/A planning, scheduling, work packaging, materials management, joint integrity, dimensional control and progress tracking during execution are integrated into one process utilizing our state of the art application software (MODs).



# ENGINEERING

- Design for Safety
- Project Management
- Process Design
- Mechanical
- Civil / Structural
- Piping
- Instrumentation & Controls
- Electrical
- Environmental
- Project Controls
- Constructability
- TIC Estimating
- Laser Scanning & Model Integration

# PROCUREMENT



## Supply Chain Management:

- Procurement
- Expediting
- Vendor Document Control
- Inspection & QA/QC
- Material Control
- Logistics
- Fabrication Supply
- Manufacturing Supply
- Modular Manufacturing

## FULL SERVICE EPC

# CONSTRUCTION MANAGEMENT

- Project Managers
- Construction Managers
- Field Coordinators
- Field Engineers
- Cost Control
- Scheduling / Planning
- Material Control
- Safety Coordination
- Quality Assurance
- Document Control
- Administrative Assistance

# CONSTRUCTION



- Workforce Planning
- Mechanical
- Piping
- Civil / Structural
- Control Systems
- Electrical
- Scaffolding
- Cost Control
- Constructability
- Estimating
- Scheduling

# MODS

**MODS Virtual Manager** suite of tools allows for automation of otherwise manual project management & control activities. Through every stage of our clients' projects, Virtual Manager helps to plan, track, manage, and streamline each step to help us deliver:

MATERIALS

SCHEDULING

QUALITY

COST SAVINGS



Learn more at:

[www.modsmanagement.com](http://www.modsmanagement.com)

# GIS SAFETY | PUTTING PEOPLE FIRST

**LIFE** is the proactive, operational, and behavior-based component of GIS's comprehensive safety management program. While our Corporate HSE group focuses on compliance, training, and incident response, the LIFE processes specifically cover Operational Safety, through: comprehensive work planning; increasing awareness of work area & task risks; intervention techniques for redirecting at-risk behaviors; embedded field presence; quarterly initiatives focused on observed areas of risk; and visible leadership engagement.

# GIS PEOPLE | DEPENDABLE. CONSISTENT.

**GIS** employees are at the heart of our business. We are committed to developing and sustaining long-standing relationships with both our internal and external clients. Each employee is committed to excellence and continuous improvement. We understand the personal component of our business and are built upon core values that drive a partnership-minded approach to providing valued solutions to our clients while understanding our clients' operations, goals, and bottom line drivers. Our **people** believe greater value is created by aligning our goals with those of our clients and striving for innovation and excellence with every opportunity.

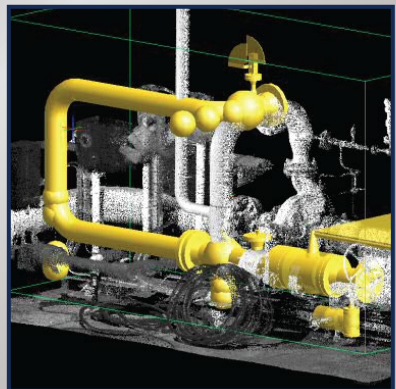
# GIS CAPABILITY SPOTLIGHT

**People** are the core of GIS's countless achievements. Through our nearly 70 years of growth and experience, we have come to embrace the latest technologies and capabilities – giving our projects and our clients a competitive edge.



## LASER SCANNING & MODEL INTEGRATION

With Laser Scanning, GIS can quickly capture existing field conditions, and integrate them into a working 3D CAD model. Capturing complete as-built dimensional data on existing facilities, GIS can minimize operational shutdowns, reduce risk, reworks, and field fabrication needs – all resulting in lower project cost, quicker completion, and safer workers.



# GIS PROJECT EXPERIENCE



The hallmarks of GIS's success are completing quality projects on schedule and achieving our cost targets. We consistently prove the effectiveness of our project planning and management system through successful project execution. GIS has performed as both a Core / Primary Contractor and as a sub-contractor in upstream, midstream, and downstream markets, providing a wide array of self-performed services, and working alongside other contractors from many diverse disciplines.



## Blue Racer Natrium Plant

GIS provided turn-key construction services for the Inlet Condensate, ISO Butane, Slug Catcher, and Ground Flare projects at the Natrium Facility in Proctor, WV. These projects illustrate GIS's ability to simultaneously perform multiple capital projects of varying size, scope, and conditions, while maintaining the quality and safety standards that our customers have grown to expect.



## Chevron Mabee Project

GIS installed NGL Recovery Equipment at the Chevron Mabee CO<sub>2</sub> Compression Facility in Midland, TX, with all construction taking place inside an existing operating plant. In addition to being the single qualified contractor for all three phases of work, GIS self-performed all civil work, piping connections, setting of equipment skids, electrical & instrumentation, as well as start-up and commissioning.



## Shell MARS Platform Recovery

The Shell MARS Platform was significantly damaged by Hurricane Katrina's 170 mph sustained winds and eighty-foot waves. GIS provided 360 personnel, produced all ISO drawings, designed all work packages, managed all Intelligent Connected Piping. GIS managed its own crews as well as the crews of two other companies, and provided all necessary tools and equipment. With this project, GIS was not only able to help return the largest producing platform in the Gulf of Mexico back to service, but did so ahead of schedule.



# GIS CONTACT US



ENGINEERING LLC

**Baton Rouge, LA**  
450 Laurel St.  
Suite 1500  
Baton Rouge, LA 70801  
225-408-0700

[www.gisyeng.com](http://www.gisyeng.com)

*Contact us for specific  
project information  
and bid requests.*

[proposals@gisy.com](mailto:proposals@gisy.com)

# GIS FACILITIES & OFFICES

**Galliano, LA**  
Abbeville, LA  
Anchorage, AK  
Baton Rouge, LA  
Big Lake, AK  
Fourchon, LA  
Franklinton, LA  
Gretna, LA  
Houma, LA  
Houston, TX

Lafayette, LA  
Lafitte, LA  
Larose, LA  
Mobile, AL  
Odessa, TX  
Pearsall, TX  
Trinidad & Tobago  
Venice, LA  
Washington, PA

# GIS OPERATIONS



● Alaska / North Slope

## Corporate Headquarters:

**Galliano, LA**  
18838 Hwy. 3235  
Galliano, LA 70354  
985-475-5238

